

Hi-Clean Sanitary Hangers & Supports

For Clean Work Areas & Process Piping

Hygienic Hangers - Slim Series HHS



STAUFF Process Technology Introduction			2
Slim Series Hangers Only	Type HHS		3
Slim Series with Mounting Rods	Type HHS TR		4

Hygienic Hangers - Heavy Series HHH



Heavy Series Top Mount	Type HHH T		5
Heavy Series Bottom Mount	Type HHH B		6
Heavy Series Multi-mount	Type HHH M		7

Hygienic Hangers - Slim Series HHS



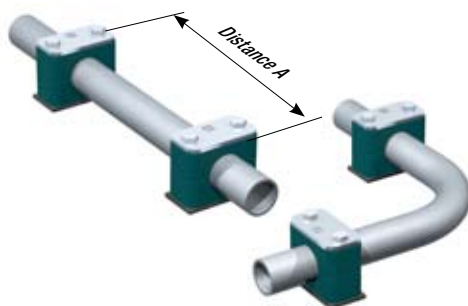
Mounting rods and gaskets	Type HR		8
Other Assembly Options			9

Smooth Bore Block Style



Intro to smooth bore block style		10	DIN rail mount assembly	Type SM	14
Weld plate assembly	Type SPR	11	Stacking assemblies	Type SIG-AF	15
Hang Plate assembly	Type SHP	12	Hardware and Components		16
Anchor Base Plate Assembly	Type SPV	13	Other Assembly Options		17
Strut Mount assembly	Type CRA	14			

Technical Appendix



Hanger Spacing, Loads, Mechanical Properties			18
--	--	--	----

Local solutions for individual customers worldwide.

The STAUFF Group was established in the 1950's as a family-run contract machine shop based in the heart of Industrial Germany. We have since become an internationally known developer, manufacturer and supplier of pipework equipment and hydraulic components.

In the 1960's we recognized the advantages of a vibration and noise reducing pipe support; our beginning to the STAUFF clamp success story. Today the international network of STAUFF production facilities, logistics and service centers, with operations in almost 20 countries, covers all corners of the globe and employs over 1200 team members.

Since 1972 STAUFF Americas has been serving the needs of customers and now with locations in New Jersey, Michigan, Ontario and Brazil.

We are constantly adding engineered products to the list of components that we manufacture and supply to the marketplace.

STAUFF - Local solutions for individual customers worldwide

STAUFF Process Technology

STAUFF Stainless Steel hygienic support systems were developed for use in a clean environment with the highest demands for hygienic design. They are primarily used for process piping in fields of biotech, pharmaceutical, food, beverage, dairy and micro-electronics.

ASME-BPE Compliant

- Our rounded hygienic series is designed to comply with specifications and guidelines as defined by ASME-BPE standard

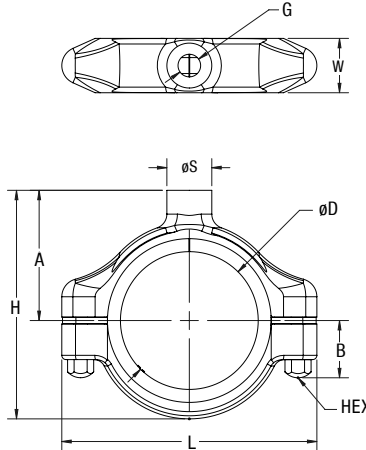
Clean Design

- Our patented round geometry reduces collection of contamination
- Designed without hinges and minimal voids where contaminants can be trapped
- No exposed threads

Hygienic Features

- Hanger housings are of a polished CF8 and CF8M, casted equivalents of 304 and 316 stainless steel
- All non-metallic materials are FDA compliant
- High temperature inserts compatible with steam line temperatures up to 400° F (204° C)
- Silicone insert provides vibration dampening to extend equipment life
- Captive fasteners, never lose a bolt again
- Custom design support systems to fit your specific application

Slim-Line Hygienic Hanger - Type HHS
BPE compliant for use in clean work areas



Features

- Captive fasteners keep bolts in housing
- Less components for quick assembly
- Slim design housing fits within 1" of insulation wrap
- Multiple mounting options
- Compatible with STAUFF Slope-Rite adjustment system for slope alignment
- Housings marked with size, material grade and traceability code

Specifications

Temperature

- Maximum 400°F / 204°C continuous

Size Range

- 0.25 to 6.62 in / 6 - 168mm for tube, pipe, copper tube, ISO and DIN

Housing material

- Polished 304 or 316 Stainless Steel (Casting grade CF8 or CF8M)

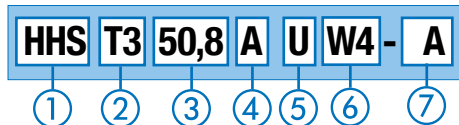
Insert

- FDA compliant high temperature compatible materials
- Anchor - one piece blue silicone. Allows for slope alignment and vibration dampening
- Guide - two piece off-white insert. Allows free axial movement for thermal expansion

Cleanable design with rounded geometry to minimize areas where contamination can collect or be trapped. High temperature resistance for use with steam service. STAUFF patented design accommodates slope alignment for drainability.

Below diameters are factory stock, other diameters available upon request

Order Code



1 Model Code

Hygienic Hanger Slim-Line Series **HHS**

2 Threaded Top Mount Design (T)

Size Range (inches/mm)	Group Number
0.25 ... 0.88 / 6 ... 22	1
1 ... 1.38 / 25 ... 35	2
1.5 ... 2.13 / 38 ... 54	3
2.38 ... 2.88 / 60 ... 73	3L
3.00 ... 3.50 / 76 ... 89	4
4 ... 4.50 / 101 ... 115	5
6 ... 6.62 / 152 ... 168	6

3 Insert diameter (Ød in mm)

See chart beside

4 Insert design

Anchor, Silicone **A**
 Guide, PTFE and Polyamide **G**
 Note: Guide has a larger diameter allows tube or pipe free movement axially through hanger for thermal expansion

5 Mounting Thread

UNC threads (standard in Americas) **U**
 Metric threads (standard in Europe) **M**

6 Housing Material

CF8, casting equivalent to 304 Stainless Steel **W4**
 CF8M, casting equivalent to 316 Stainless Steel **W5**

7 Packaging

Loosely assembled, polybagged and labeled **A**
 Loose components, bulk packaged, sold by case qty **V**
 24, box quantity of 24 pieces (Group 1 and 2)
 12, box quantity of 12 pieces (Group 3 and 3A)
 6, box quantity of 6 pieces (Group 4, 5 and 6)
 Loosely assembled and bulk packed **B**

Dimensions

STAUFF Group Number	Tube (ød)	Copper Tube	Pipe (IPS)	Part Number Code (Anchor ød in mm)	Dimensions for Slim Line Type HHS (inches/mm)										Wt lbs (g)
					Guide ød in mm	A	B	H	L	W	S	HEX	G		
1	1/4"			06.4	n/a	1.03	0.60	1.68	2.02	0.63	0.62	5/16"	3/8"-16 UNC	0.2	
	3/8"	1/4"		09.5	n/a										
	1/2"	3/8"		12.7	13.7										
	2	5/8"	1/2"		15.9	16.9	26.2	15.2	42.7	51.3	16.0	15.7	0.8	91	
				3/8"	17.3	18.3									
				1/2"	21.3	22.3									
3		7/8"	3/4"		22.2	n/a	1.37	0.81	2.27	2.52	0.63	0.62	5/16"	3/8"-16 UNC	0.28
		1"			25.4	26.4									
			1"		26.7	27.7									
	3L			3/4"	28.6	29.6	34.8	20.6	57.7	64.0	16.0	15.7	0.8	127	
			1.1/4"		31.8	n/a									
				1"	33.5	34.5									
4			1.1/4"		34.9	n/a	1.80	0.79	3.15	3.52	0.75	0.62	5/16"	3.8"-16 UNC	0.70
		1.1/2"			38.1	39.1									
			1.1/2"		41.3	42.2									
	5			1.1/2"	48.3	49.3	2.59	1.12	4.57	5.00	0.88	0.75	3/8"	1/2"-13 UNC	1.4
				2"	54	55.3									
			2"		60.5	61.8									
6		2.5"		2"	63.5	64.8	65.9	28.5	116	127	22.4	19	9.5	635	
			2.5"		66.7	n/a									
				2.5"	73.2	74.5									
	4			2"	79.4	n/a	2.81	1.46	4.94	5.25	0.88	0.75	3/8"	1/2"-13 UNC	1.4
				2"	88.9	90.2									
			2.5"		63.5	n/a									
5				2.5"	77.5	77.5	71.4	37.1	125.4	133.3	22.4	19	9.5	635	
			3"		79.4	n/a									
				3"	88.9	90.2									
	6	4"			101.6	102.9	3.67	1.59	6.54	6.75	1.00	0.74	3/8"	1/2"-13 UNC	2.4
			4"		104.8	n/a									
				4"	114.3	115.6									
6		6"			152.4	153.7	5.06	2.18	9.17	9.00	1.25	1.00	7/16"	3/4"-10 UNC	4.6
				6"	168.4	169.7									

Slim-Line Hanger with Mounting Rod • Type HHS TR
Mounting Rod and Hanger Assembly

Features

- No exposed threads, machined rod threads bury in hanger housing
- Optional silicone gasket between housing stem and rod ordered separately, information on page 10
- Mounting rod diameters range from 3/8" / 9.5mm to 1" / 25.4mm
- Standard rod lengths 6 and 12in / 52 & 305mm, other lengths available
- Available with base plate or stanchions
- Housings are marked with size, material grade and traceability code

Specifications

Temperature

- Maximum 400°F / 204°C continuous

Size Range

- 0.25 to 6.62 in / 6 - 168mm for tube, pipe, copper tube, ISO and DIN

Housing Material

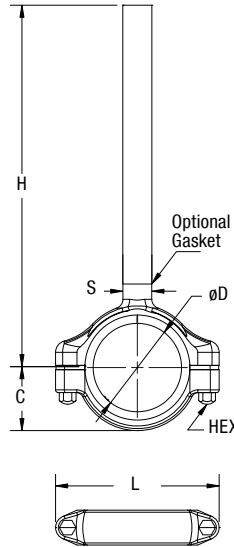
- Polished 304 or 316 Stainless Steel , rods T304 or T316 Stainless

Insert

- FDA compliant material and compatible with steam service

Anchor - one piece blue silicone. Allows for slope alignment and vibration dampening

Guide - two piece off-white insert. Allows free axial movement for thermal expansion



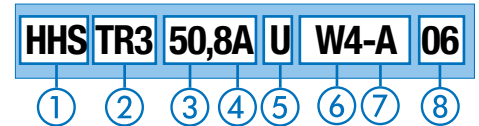
Hanger stem designed with same diameter as mounting rod. For different rod diameters, order hanger assembly separately from mounting rod.

Dimensions

Overall height dimension "H" is calculated using a 6" (152mm) rod. Because rod lengths will vary, dimension "H" will change.

STAUFF Group Number	Tube (ød)	Copper Tube	Pipe (IPS)	Part Number Code (Anchor ød in mm)	Dimensions for Type HHS TR (inches/mm)					
					Guide ød in mm	H (w/o gasket)	C	L	S	Hex
1	1/4"			06.4	n/a	7.03	0.65	2.02	0.62	5.16
	3/8"	1/4"		09.5	n/a					
	1/2"	3/8"		12.7	13.7					
			1/4"	13.7	14.7					
	5/8"	1/2"		15.9	16.9					
			3/8"	17.3	18.3					
	3/4"			19.1	20.0					
2	7/8"	3/4"		21.3	22.3	178.6	16.5	51.3	15.7	0.8
			1/2"	22.2	n/a					
	1"			25.4	26.4					
			3/4"	26.7	27.7					
		1"		28.6	29.6					
	1.1/4"			31.8	n/a					
			1"	33.5	34.5					
3		1.1/4"		34.9	n/a	7.37	0.9	2.52	0.62	5/16
	1.1/2"			38.1	39.1					
		1.1/2"		41.3	42.2					
			1.1/4"	42.2	n/a					
			1.1/2"	48.3	49.3					
	2"			50.8	51.8					
		2"		54	55.3					
3L			2"	60.5	61.8	7.80	1.35	3.52	0.62	5/16
	2.5"			63.5	64.8					
		2.5"		66.7	n/a					
			2.5"	73.2	74.5					
			2"	60.5	n/a					
	2.5"			63.5	n/a					
		2.5"		66.7	n/a					
4			2.5"	73.2	n/a	198	34.3	89.4	15.7	0.8
	3"			76.2	77.5					
		3"		79.4	n/a					
			3"	88.9	90.2					
	4"			101.6	102.9					
		4"		104.8	n/a					
			4"	114.3	115.6					
5	6"			152.4	153.7	8.59	1.98	5.00	0.75	3/8
				168.4	169.7					
		6"		168.4	169.7					
6				152.4	153.7	218.2	50.3	127	19	9.5
				152.4	153.7					
		6"		152.4	153.7					

Order Code



① **Model Code**

Hygienic Hanger Slim-Line Series **HHS**

② **Rigid Rod Design (TR)**

Size Range (inches/mm)	Group Number
0.25 ... 0.88 / 6 ... 22	1
1 ... 1.38 / 25 ... 35	2
1.5 ... 2.13 / 38 ... 54	3
2.38 ... 2.88 / 60 ... 73	3L
3.00 ... 3.50 / 76 ... 89	4
4 ... 4.50 / 101 ... 115	5
6 ... 6.62 / 152 ... 168	6

③ **Insert diameter (Ød in mm)**

See chart beside

④ **Insert design**

Anchor, Silicone **A**
Guide, PTFE and Polyamide **G**
Note: Guide has a larger diameter allows tube or pipe free movement axially through hanger for thermal expansion

⑤ **Mounting Thread**

UNC threads (standard in Americas) **U**
Metric threads (standard in Europe) **M**

⑥ **Housing & Solid Rod Material**

304 Stainless Steel **W4**
316 Stainless Steel **W5**

⑦ **Packaging**

Loosely assembled, polybagged and labeled **A**
Loose components, bulk packaged, sold by case qty. **V**
24, box quantity of 24 pieces (Group 1 and 2)
12, box quantity of 12 pieces (Group 3 and 3A)
6, box quantity of 6 pieces (Group 4, 5 and 6)
Loosely assembled and bulk packed **B**

⑧ **Rod Length and Diameter**

6" length **06**
12" length **12**

Hygienic Hanger Heavy Series, Top Mount - Type HHH T

BPE compliant for use in clean work areas



Superior cleanability, slope alignment, vibration dampening and thermal capabilities.
Mounting rods not included, see information on page 8.

Features

- Patented Rounded geometry, the top mounting style allows water and debris to drain or fall off hanger. Designed to be suspended from above, there are no flat shelf like surfaces facing upward. The silicone insert minimizes potential for trapping contaminants offering the cleanest design hanger. Allows installers to slope tube at desired drain angle without additional adjustments or having to angle the hanger housing.

Specifications

Temperature

- Maximum 400°F / 204°C continuous

Size Range

- Bore diameter 0.25 - 6.62 inch / 6 - 168mm for tube, copper tube, pipe, ISO and DIN

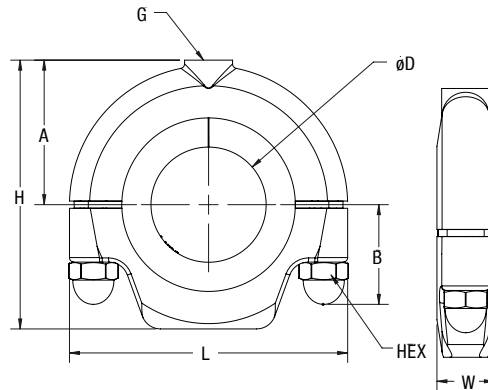
Housing material

- Polished 316 Stainless Steel (casting grade equivalent CF8M)
- FDA compliant materials
- Anchor - is one piece blue silicone.

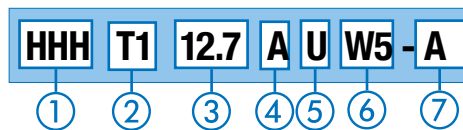
Allows for slope alignment and vibration dampening
Guide - White PTFE or Off-White Polyamide two piece insert.
Allows free axial movement of pipe and tube for thermal expansion

Mounting Options

- Mounting rods available, see pages 8-9



Order Code



① Housing Design

Hygienic hanger heavy, original design - 316 ss **HHH**

② Threaded Top Mount Design (T)

Size Range (inches/mm)	Group Number
0.25...0.78 / 6.4 ... 22.2	1
1 ... 1.375 / 25.4 ... 34.9	2
1.5 ... 2.12 / 38.1 ... 54	3
2.38 ... 3.5 / 60.5 ... 88.9	4
4 ... 4.5 / 101.6 ... 114.3	5
6 ... 5" / 152.4 ... 168.4	6

③ Insert diameter (Ød in mm)

See chart beside

④ Insert design

Anchor, Silicone	A
Guide, PTFE and Polyamide	G
Guide has a larger diameter allows pipe or tube free movement axially through hanger for thermal expansion	

⑤ Mounting Thread

UNC threads (standard in Americas)	U
Metric threads (standard in Europe)	M

⑥ Housing Material

CF8M - 316ss	W5
--------------	-----------

⑦ Packaging

Loosely polybagged and labelled	A
Loose components in boxes of 6, 12 or 24	V
Group 1-2 boxes of 24	
Group 3 boxes of 12	
Group 4-5 boxes of 6	
Loosely assembled & bulk packed	B

Dimensions

STAUFF Group Number	Tube (ød)	Copper Tube	Pipe (IPS)	Part Number Code (Diameter in mm)	Dimensions for Slim Line HHH T (inches/mm)							Wt lbs (g)	
					A	B	H	L	W	HEX	G		
1	1/4"			06.4	1.25	0.94	2.22	2.02	0.63	7/16"	3/8"-16 UNC	0.32	
	3/8"	1/4"		09.5									
	1/2"	3/8"		12.7									
			1/4"	13.7	31.7	23.9	56.4	51.3	16.0				145
	5/8"	1/2"		15.9									
	3/4"		1/2"	21.3									
	7/8"	3/4"		22.2									
2	1"			25.4	1.5	1.15	2.72	2.52	0.63	7/16"	3/8"-16 UNC	0.44	
			3/4"	26.7									
		1"		28.6									
	1.1/4"			31.8	38.1	29.2	69.1	64.0	16.0				200
			1"	33.5									
		1.1/4"	34.9										
3	1.1/2"			38.1	1.88	1.62	3.5	3.62	0.75	9/16"	3/8"-16 UNC	0.95	
			1.1/4"	42.2									
			1.1/2"	48.3									
	2"			50.8	47.8	41.2	88.9	92.0	19.1				430
		2"		54									
4			2"	60.5	2.63	2.44	5.07	5.25	0.88	9/16"	1/2"-13 UNC	1.97	
	2.5"			63.5									
		2.5"		66.7									
			2.5"	73.2	66.8	62.0	128.8	133.4	22.4				890
	3"			76.2									
		3"		79.4									
		3"	88.9										
5	4"			101.6	3.50	3.12	6.62	6.75	1.00	5/8"	5/8"-11 UNC	3.35	
		4"		104.8									
			4"	114.3	88.9	79.5	168.1	171.5	25.4				1520
				114.3									
6	6"			152.4	4.5	4.38	8.88	9.00	1.25	3/4"	3/4"-10 UNC	7.41	
			6"	168.4									114.3

Hygienic Hanger Heavy Series, Bottom Mount -Type HHH B
BPE compliant for use in clean work areas

Features

- Patented Rounded geometry, the bottom mounting style allows water and debris to drain or fall off hanger. Designed to be mounted above a structure and to stand off a vertical structure or wall. The half moon shaped top eliminates flat shelf like surfaces facing upward. The silicone insert minimizes potential for trapping contaminants offering the cleanest design hanger. Allows installers to slope tube at desired drain angle without additional adjustments or having to angle the hanger housing.

Specifications

Temperature

- Maximum 400°F / 204°C continuous

Size Range

- Bore diameter 0.25 - 6.62 inch / 6 - 168mm for tube, copper tube, pipe, ISO and DIN

Housing material

- Polished 316 Stainless Steel (casting grade equivalent CF8M)
- FDA compliant materials

Anchor - is one piece blue silicone.

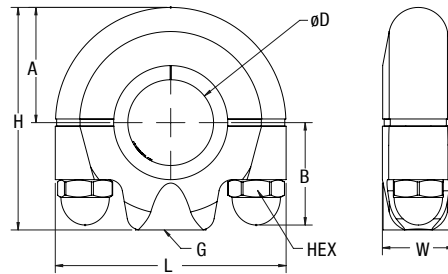
Allows for slope alignment and vibration dampening

Guide - White PTFE or Off-White Polyamide two piece insert.

Allows free axial movement of pipe and tube for thermal expansion

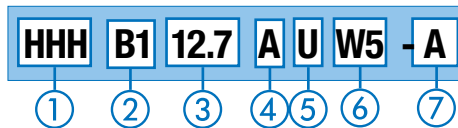
Mounting Options

- Mounting rods available, see pages 8-9



Mounting rods not included, see information on page 8.

Order Code



① Housing Design

Hygienic hanger heavy, original design - 316 ss **HHH**

② Threaded Bottom Mount Design (B)

Size Range (inches/mm)	Group Number
0.25... 0.78 / 6.4 ... 22.2	1
1 ... 1.375 / 25.4 ... 34.9	2
1.5 ... 2.12 / 38.1 ... 54	3
2.38 ... 3.5 / 60.5 ... 88.9	4
4 ... 4.5 / 101.6 ... 114.3	5
6 ... 6.5 / 152.4 ... 168.4	6

③ Insert diameter (Ød in mm)

See chart beside

④ Insert design

Anchor, Silicone	A
Guide, PTFE and Polyamide	G
Guide has a larger diameter allows pipe or tube free movement axially through hanger for thermal expansion	

⑤ Mounting Thread

UNC threads (standard in Americas)	U
Metric threads (standard in Europe)	M

⑥ Housing Material

CF8M - 316ss	W5
--------------	-----------

⑦ Packaging

Loosely polybagged and labelled	A
Loose components in boxes of 6, 12 or 24	V
Group 1-2 boxes of 24	
Group 3 boxes of 12	
Group 4-5 boxes of 6	
Loosely assembled & bulk packed	B

Dimensions

STAUFF Group Number	Tube (ød)	Copper Tube	Pipe (IPS)	Part Number Code (Diameter in mm)	Dimensions for Slim Line HHH B (inches/mm)							Wt lbs (g)
					A	B	H	L	W	HEX	G	
1	1/4"			06.4	1.01	0.94	1.98	2.02	0.63	7/16"	3/8"-16 UNC	0.31
	3/8"	1/4"		09.5								
	1/2"	3/8"		12.7								
			1/4"	13.7								
	5/8"	1/2"		15.9								
	3/4"			19.1								
2			1/2"	21.3	25.6	23.9	50.3	51.3	16.0	7/16"	3/8"-16 UNC	140
	7/8"	3/4"		22.2								
	1"			25.4								
			3/4"	26.7								
		1"		28.6								
	1.1/4"			31.8								
3			1"	33.5	32.0	29.2	63.0	64.0	16.0	7/16"	3/8"-16 UNC	200
			1.1/4"	34.9								
	1.1/2"			38.1								
		1.1/2"		41.3								
			1.1/4"	42.2								
			1.1/2"	48.3								
4	2"			50.8	46.0	41.2	87.1	92.0	19.1	9/16"	3/8"-16 UNC	440
			2"	54								
			2"	60.5								
	2.5"			63.5								
		2.5"		66.7								
			2.5"	73.2								
5	3"			76.2	66.8	62.0	128.8	133.4	22.4	9/16"	1/2"-13 UNC	900
			3"	79.4								
			3"	88.9								
	4"			101.6								
		4"		104.8								
			4"	114.3								
6				152.4	4.5	4.38	8.88	9.00	1.25	3/4"	3/4"-10 UNC	7.36
	6"		6"	168.4								
				114.3								

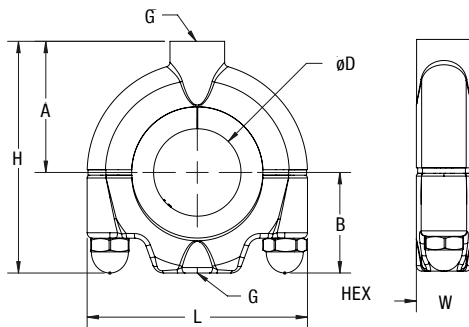
STAUFF Hygienic hangers, Multi-Mount -Type HHH M
BPE compliant for use in clean work areas



Mounting rods not included, see information on page 8.

Features

- The multi-mount allows hangers to be stacked with threaded connection on housing top and bottom. Suspended from the floor or mounted above a structure. Simply combine the multi-mount hanger with type HHH T top or B bottom mount style.
- To connect the multi-mount hangers use all-threaded adapters or ask your STAUFF sales specialist for custom length connectors.
- Combine multi-mount hanger with a standard top or bottom mount hanger to complete a multi stacking assembly. Eg. to stack two hangers you will need one multi-mount and one of either top or bottom mount hanger.



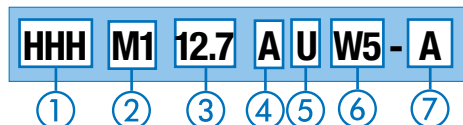
Specifications

- Temperature**
 - Maximum 400°F / 204°C continuous
- Size Range**
 - Bore diameter 0.25 - 6.62 inch / 6 - 168mm for tube, copper tube, pipe, ISO and DIN
- Housing material**
 - Polished 316 Stainless Steel (casting grade equivalent CF8M)
 - FDA compliant materials
 - Anchor - is one piece blue silicone.
 - Allows for slope alignment and vibration dampening
 - Guide - Allows free axial movement of pipe and tube for thermal expansion

Mounting Options

- Mounting rods available, see pages 8-9

Order Code



① Housing Design

Hygienic hanger heavy, original design - 316 ss **HHH**

② Threaded Multi-mount Design (M)

Size Range (inches/mm)	Group Number
0.25... 0.78 / 6.4 ... 22.2	1
1 ... 1.375 / 25.4 ... 34.9	2
1.5 ... 2.12 / 38.1 ... 54	3
2.38 ... 3.5 / 60.5 ... 88.9	4
4 ... 4.5 / 101.6 ... 114.3	5
6 ... 6.5" / 152.4 ... 168.4	6

③ Insert diameter (Ød in mm)

See chart beside

④ Insert Style

Anchor, Silicone **A**
 Guide, PTFE and Polyamide **G**
 Note: Guide has a larger diameter allows pipe or tube free movement axially through hanger for thermal expansion

⑤ Mounting Thread

UNC threads (standard in Americas) **U**
 Metric threads (standard in Europe) **M**

⑥ Housing Material

CF8M - 316ss **W5**

⑦ Packaging

Loosely polybagged and labelled **A**
 Loose components in boxes of 6, 12 or 24 **V**
 Group 1-2 boxes of 24
 Group 3 boxes of 12
 Group 4-5 boxes of 6
 Loosely assembled & bulk packed **B**

Multi-Mount Connection Accessories

STAUFF Group	All Thread Adapter	Flat Gaskets	Jam Nut
1-3	TR-3/8-W4-1.0	HHG-3-SL	SLN U W4
4	TR-1/2-W4-1.0	HHG-4-SL	C/F

* Custom lengths and solid connection rods available

Dimensions

STAUFF Group Number	Tube (ød)	Copper Tube	Pipe (IPS)	Part Number Code (Diameter in mm)	Dimensions for Type HHH M							Wt lbs (g)			
					A	B	H	L	W	HEX	G				
1	1/4"			06.4	1.25	0.94	2.22	2.02	0.63	7/16"	3/8"-16 UNC	0.32			
	3/8"	1/4"		09.5											
	1/2"	3/8"		12.7											
	2	5/8"	1/2"	1/4"	13.7	31.7	23.9	56.4	51.3			16.0	7/16"	3/8"-16 UNC	145
		3/4"			15.9										
		7/8"	3/4"	1/2"	19.1										
1"				21.3											
3	1 1/4"			22.2	38.1	29.2	69.1	64.0	16.0	7/16"	3/8"-16 UNC	200			
	1"		3/4"	25.4											
	1 1/4"	1"		28.6											
	1 1/2"		1"	31.8											
	1 1/2"	1 1/4"		33.5											
4	1 1/2"			34.9	47.8	41.2	88.9	92.0	19.1	9/16"	3/8"-16 UNC	430			
	2"			38.1											
	2"	2"		41.3											
	2 1/2"		2"	42.2											
5	2 1/2"			48.3	66.8	62.0	128.8	133.4	22.4	9/16"	1/2"-13 UNC	890			
	3"			50.8											
	3"	3"		54											
	3"		2 1/2"	60.5											
	3"		3"	63.5											
6	4"			66.7	88.9	79.5	168.1	171.5	25.4	5/8"	5/8"-11 UNC	3.35			
	4"	4"		67.2											
	4"		4"	76.2											
7	6"			79.4	114.3	111.3	225.6	228.6	31.8	3/4"	3/4"-10 UNC	7.41			
	6"			88.9											
	6"	6"	6"	101.6											
8	6"			104.8	114.3	111.3	225.6	228.6	31.8	3/4"	3/4"-10 UNC	3360			
	6"			114.3											
	6"			152.4											

Mounting Rods - Type HR

Features

- Threads into rounded hygienic hangers type HHH, HHS and block style with hang plate type SHP. Solid rod provides sturdy, cost effective mounting to weld hanger to support structure. Machined threads bury into hanger housing.
- Optional silicone gasket available to seal between rod and hanger.


Specifications

- 3/8" to 1" outside diameter with various rod lengths and thread sizes.
- Available in 304L, 316L stainless steel and carbon steel
- Refer to Rod thread size chart below to match the correct hanger group size with rod threads.

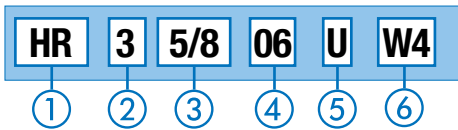


Hanger and Rod Thread Size Ordering Guide

Pipe / Tube øD (inches / mm)	HHS Series	HHH Series	SHP Series
.25 ... 2 / 6.4 ... 50.8	3/8" - 16 Group 1 - 3	3/8" - 16 Group 1 - 3	3/8" - 16 Group 3 and 6
2.38 ... 3.5 / 60.5 ... 88.9	1/2" - 13 Group 3L - 4	1/2" - 13 Group 4	3/8" - 16 or 1/2" - 13 Group 7L
4 ... 4.5 / 101.6 ... 114.3	1/2" - 13 Group 5	5/8" - 11 Group 5	3/8" - 16 or 1/2" - 16 Group 8
6 ... 6.62 / 152.4 ... 168.4	3/4" - 10 Group 6	3/4" - 10 Group 6	5/8" - 11 Group 9L

	Silicon Gasket	Rod øD (inches/mm)
	HR-G-1/2-SL	0.5 / 12
	HR-G-5/8-SL	0.625 / 15
	HR-G-3/4-SL	0.75 / 19

Order Code



① HR Mounting Rod

Solid rod with threaded end **HR**

② Rod Thread Size (inches/metric)

3/8" - 16 / M10	Groups 1-3 Slim and Heavy	3
1/2" - 13 / M12	Groups 3L-5 Slim and group 4 heavy	5S
5/8" - 11 / M16	Group 5 Heavy	5H
3/4" - 10 / M20	Group 6 Slim and Heavy	6

For metric sizes consult factory

③ Rod Diameter (ød in mm)

3/8" (10)	3/8
1/2" (12)	1/2
5/8" (16)	5/8
3/4" (20)	3/4
1" (25)	1

④ Rod Length

6"	06
12"	12
24"	24

Other lengths available, consult factory

⑤ Thread Type

UNC	U
Metric	M

⑥ Material

304 Stainless steel	W4
316 Stainless steel	W5
Carbon Steel	W1

Assembly Examples with HR Mounting Rod

Rod with Type SHP

Rod with Type HHS



Mounting Assemblies



Direct Tube Mount



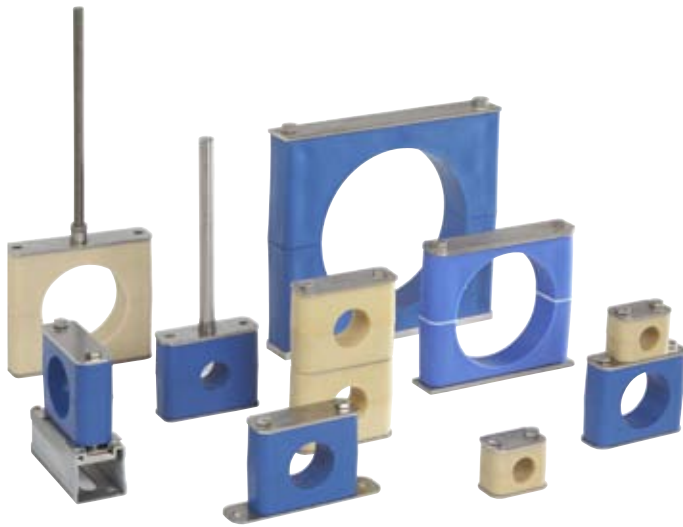
Multi Base Plate Assembly



Wall Mount for Multi Tube / Pipe Runs

NOTE: The products on this page are available directly from our distributors.

Smooth Bore Block Style Hangers



Features

- STAUFF smooth bore block style supports provide 100 per cent contact around the tube or pipe to minimize entrapment of contaminants during use and in a washdown environment.
- Multiple mounting options to fit on most plumbing installations
- Molded inserts for bore diameters up to 6 inch pipe size (168mm)
- Available as anchors to secure pipe in all directions and guides to allow pipe free axial movement

Custom Design and Fabrication

STAUFF CNC and injection molding operations provide custom design manufactured support systems for pipes, tubes, hoses, cables and other components according to customer's specifications and STAUFF developments. Materials include thermoplastics, metals and non-ferrous metals. Mounting accessories and hardware are available.

Insert Materials




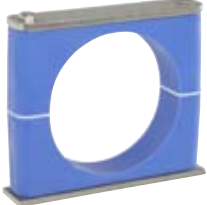
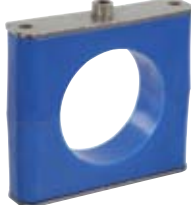


Molded Thermoplastic Elastomer



Molded Polypropylene



Machined PTFE (and other plastics)

 <p>SPR - Weld plate with round corners.</p>	 <p>SEG Guide Spacer Inserts Allows free axial movement of pipe.</p>	 <p>SHP - Hang Plate Assembly</p>	 <p>SPV - Anchor Base Plate Use anchors where welding is not possible.</p>
 <p>CRA - Channel Rail Assembly Mounts to channel strut such as Hilti, Unistrut, etc...</p>	 <p>SM - DIN Rail Assembly Mounting STAUFF DIN Rail</p>	 <p>SIG - Stack Assembly Same group size.</p>	 <p>TDF - Stack Assembly Different group sizes.</p>

Custom and Modular design support systems

Machine version - CNC machined supports produced in house and available in a range of thermoplastics including Polyamides, Polyethylene, UHMW, PTFE, and UHMW
Injection molded version - STAUFF Flexi-tool provides cost effective tooling for higher quantity applications, reduce labor and component costs.



Smooth Bore Block Style Hangers
Weld plate assembly ▪ Type SPR



Specifications

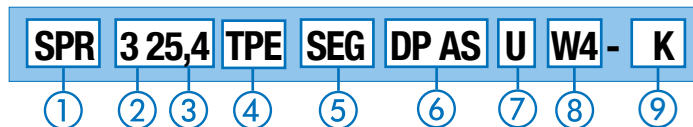
Materials

- Hardware available in 304 and 316 Stainless Steel, optional Carbon Steel, plated.
- Molded inserts - Thermoplastic Elastomer and Polypropylene
- Machined inserts - Hi-temp PTFE

Size Range

- 0.25 to 8.62 in / 6 to 219 mm for tube, pipe and copper tube
- Consult factory for special diameters

Order Code



1 Hanger type

- Weld plate with round corners **SPR**
- Weld plate with square corners (view notes * and **) **SPR**

2 Group Number & Size Range

.25 ... 1.0 in / 6 ... 25.4mm	3
.25 ... 2.0 in / 6 ... 50.8mm	6
2.0 ... 3.5 in / 38 ... 88.9mm	7L
4.0 in / 102mm	** 8
4.5 ... 6.62 in / 115 ... 168mm	** 9L
8.0 ... 8.62 in / 203 ... 219mm	** 10L

3 Insert diameter (Ød in mm)

See sizing chart - column Part Number Code

4 Insert Material and Color

Thermoplastic Elastomer	Natural	TPE
Poly Propylene	Blue	PPC
PTFE	White	PTF

5 Special Material

- Standard hanger - Anchor **Omit**
- Larger diameter - Guide **SEG**

6 Finishing Assembly Hardware

- Cover plate and hex bolts **DP AS**

7 Thread Type

- UNC threads **U**
- Metric thread **M**

8 Hardware Material Code

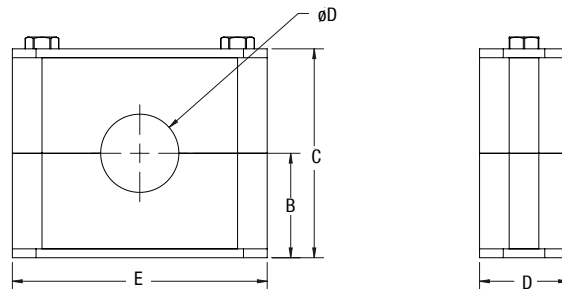
- All parts 304 stainless steel **W4**
- All parts 316 stainless steel **W5**
- Weld plate phosphated, cover plate and bolts zinc plated *****W10**

9 Packaging

- Hanger components are bulk packaged **Omit**
- Individual hanger assemblies are kitted in a polybag and labelled **K**

Features

- Smooth bore design helps to minimize entrapment of contamination and cleaning solutions
- Hardware plates have rounded corners for safe installation in clean areas
- Anchors: Secure pipe in all directions
- Guides: Use SEG thermal expansion tabs to open diameter and allow pipe to have free axial movement. Weld base plate to structure, add insert, pipe or tube, and secure with cover plate and fasteners.



Dimensions

STAUFF Group Number	Tube (ød)	Copper Tube	Pipe (IPS)	Part Number Code (Diam. in mm)	Dimensions Type SPR (inches/mm)				Weight (lbs/g)
					B	C	D	E	
3	1/4"			06,4	0.81	1.61	1.18	1.97	.20
	3/8"	1/4"		09,5					
	1/2"	3/8"		12,7					
				19	20.5	41.0	30.9	50.0	97
			1/2"	21,3					
6	1/4"			06,4	1.40	2.80	1.18	3.48	.36
	3/8"	1/4"		09,5					
	5/8"	1/2"		16					
			1/2"	21,3					
	7/8"	3/4"		22					
	1"			25,4					
			3/4"	26,9					
	1.1/4"			32					
			1"	33,7					
	1.1/2"			38					
			1.1/4"	42					
		1.1/2"	48,3						
		2"	50,8						
		2"	50,8						
7L			2"	60,3	2.24	4.49	1.18	5.00	.69
	2.5"			63,5					
			2.5"	73	57.0	114.0	30.0	127.0	341
			2"	76,2					
		3"	88,9						
8	4"			101,6	2.48	4.96	1.18	5.75	.93
					63.0	126.0	30	146.0	462
9L			4"	114,3	4.11	7.99	1.38	8.75	2.45
	6"			152,4	104.5	202.9	35.0	222.0	1223
			6"	168,4					
10L	8"			203 **	C/F	C/F	C/F	C/F	C/F
			8"	219 **					

Notes:

- * Weld plates with square corner plates are available from stock for all groups except 7L
- ** Group 9L & 10L have square corners, group 8 available with round or square corners
- *** W10 plated carbon steel hardware is stocked only in group 3,6 and 8

Smooth Bore Block Style Hangers
Hang plate assembly ▪ Type SHP

Features

- Suspend hanger with threaded rod or Stauff machined solid rod
- Smooth bore design helps to minimize entrapment of contamination
- Hardware plates have rounded corners for safe installation in clean areas
- Anchors: Secure pipe in all directions
- Guides: Use SEG thermal expansion tabs to open diameter and allow pipe to have free axial movement

Specifications

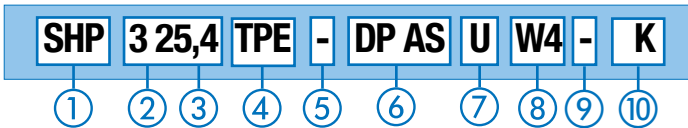
Materials

- Hardware available in 304 Stainless Steel
- Molded inserts - Thermoplastic Elastomer and Polypropylene
- Machined inserts - Hi-temp PTFE

Size Range

- 0.25 to 6.62 in / 6 to 168 mm for tube, pipe and copper tube
- Consult factory for special diameters

Order Code



1 Hanger type

Weld plate with round corners * **SHP**

2 Group Number & Size Range

.25 ... 1.0 in / 6 ... 25.4mm	3
.25 ... 2.0 in / 6 ... 50.8mm	6
2.0 ... 3.5 in / 38 ... 88.9mm	7L
4.0 in / 102mm	8
4.5 ... 6.62 in / 115 ... 168mm	*9L

3 Insert diameter (Ød in mm)

See sizing chart - column Part Number Code

4 Insert Material and Color

Thermoplastic Elastomer	Natural	TPE
Poly Propylene	Blue	PPC
PTFE	White	PTF

5 Thermal Expansion Guide

Standard hanger - Anchor **Omit**
Larger diameter - Guide **SEG**

6 Finishing Assembly Hardware

Cover plate and hex bolts **DP AS**

7 Thread Type

UNC threads **U**
MNon stock, consult factory for delivery **M**

8 Hardware Material Code

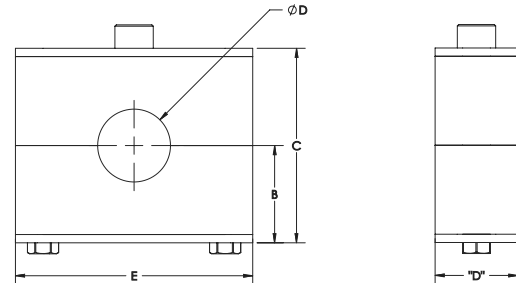
All parts 304 stainless steel **W4**
Consult factory for other hardware materials **XX**

9 Hanger Thread Size

3/8"-16 standard for groups 3-8, 5/11 for group 9L **Omit**
1/2"-13 option available for groups 7L and 8 **1/2 - UNC**

10 Packaging

Hanger components are bulk packaged **Omit**
Individual hanger assemblies are kitted in a polybag and labelled **K**

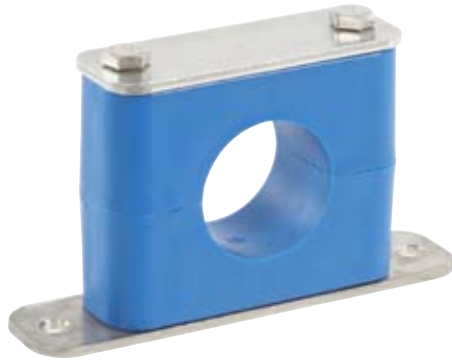


Dimensions

STAUFF Group Number	Tube (ød)	Copper Tube	Pipe (IPS)	Part Number Code (Diam. in mm)	Dimensions Type SPR (inches/mm)					Hanger Thread	Weight (lbs/g)
					B	C	D	E			
3	1/4"			06,4	0.81	1.61	1.18	1.97	3/8"-16	.23	
	3/8"	1/4"		09,5							
	1/2"	3/8"		12,7							
	3/4"			19							
			1/2"	21,3							
6	1"			25,4	20.5	41.0	30.0	50.0	3/8"-16	100	
	1/4"			06,4							
	3/8"	1/4"		09,5							
	5/8"	1/2"		16							
			1/2"	21,3							
	7/8"	3/4"		22							
	1"			25,4							
			3/4"	26,9							
	1.1/4"			32							
			1"	33,7							
7L	1.1/2"			38	35.5	71.0	30.0	88.4	3/8"-16	182	
			1.1/4"	42							
			1.1/2"	48,3							
	2"			50,8							
	2"			50,8							
			2"	60,3							
	2.5"			63,5							
8			2"	76,2	57.0	114.0	30.0	127.0	3/8"-16 or 1/2"-13	345	
			3"	88,9							
	4"			101,6							
				114,3							
9L			4"	114,3	4.11	7.99	1.38	8.75	3/8"-16 or 1/2"-13"	1.13	
	6"			152,4							
			6"	168,4							
				104,5	202.9	35.0	222.0	5/8"-11	1282		

Notes:
* Group 9L hang plate has square corners.

Smooth Bore Block Style Hangers
Anchor Base Plate Assembly - Type SPV



Specifications

Materials

- Hardware available in 304 and 316 Stainless Steel, and Carbon Steel, plated.
- Molded inserts - Thermoplastic Elastomer and Polypropylene
- Machined inserts - High Temp PTFE

Size Range

- 0.25 to 4 in / 101.6 mm for tube, pipe and copper tube
- Consult factory for larger or special diameters

Order Code

SPV 3 25,4 TPE - DP AS U W4 - K

① ② ③ ④ ⑤ ⑥ ⑦ ⑧ ⑨

① Hanger type

- Anchor base plate with square corners (Available for groups 3, 6 and 8) **SPV**
- Anchor base plate with round corners (Available for groups 3, 6 and 7L) **SPVR**

② Group Number & Size Range

.25 ... 1.0 in / 6 ... 25.4mm	3
.25 ... 2.0 in / 6 ... 50.8mm	6
2.0 ... 3.5 in / 38 ... 88.9mm	7L
4.0 in / 102mm	** 8
4.5 ... 6.62 in / 115 ... 168mm	** 9L

③ Insert diameter (∅d in mm)

See sizing chart - column Part Number Code

④ Insert Material and Color

Thermoplastic Elastomer	Natural	TPE
Poly Propylene	Blue	PPC
PTFE	White	PTF

⑤ Thermal Expansion Guide

- Standard hanger - Anchor **Omit**
- Larger diameter - Guide **SEG**

⑥ Finishing Assembly Hardware

- Cover plate and hex bolts **DP AS**

⑦ Thread Type

- UNC threads **U**
- Metric thread **M**

⑧ Hardware Material Code

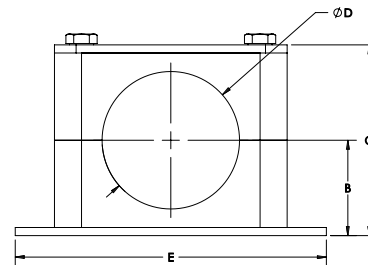
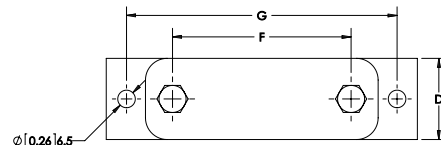
- All parts 304 stainless steel **W4**
- All parts 316 stainless steel **W5**
- Plated Carbon Steel **W3**

⑨ Packaging

- Hanger components are bulk packaged **Omit**
- Individual hanger assemblies are kitted in a polybag and labelled **K**

Features

- Anchor hanger assembly to structure, no welding required
- Smooth bore design helps to minimize entrapment of contamination
- Base plates available with square and rounded corners
- Anchors: Secure pipe in all directions
- Guides: Use SEG thermal expansion tabs to open diameter and allow pipe to have free axial movement



Dimensions

STAUFF Group Number	Tube (∅d)	Copper Tube	Pipe (IPS)	Part Number Code (Diam. in mm)	Dimensions Type SPV and SPVR (inches/mm)					
					B	C	D	E	F	G
3	1/4"			06,4	0.81	1.61	1.18	SPV 3.07	1.97	SPV 2.52
	3/8"	1/4"		09,5				78.0		64.0
	1/2"	3/8"		12,7						
				19	20.5	41.0	30.0	SPVR 3.38	50.0	SPVR 2.60
			1/2"	21,3				85.9		66.0
				25,4						
6	1/4"			06,4	1.40	2.80	1.18	SPV 4.53	3.48	SPV 3.94
	3/8"	1/4"		09,5				115.0		100.0
	5/8"	1/2"		16						
			1/2"	21,3						
				22						
				25,4	35.5	71.0	30.0	SPVR 5.0	88.4	SPVR 4.25
			3/4"	26,9				127.0		107.9
				32						
			1"	33,7						
				38						
7L				42	2.24	4.49	1.18	6.5	5.00	5.8
			1.1/4"	48,3						
			1.1/2"	50,8						
				50,8	57.0	114.0	30.0	165.1	127.0	147.3
			2"	60,3						
			2.5"	63,5						
8				73	2.53	5.01	1.18	7.01	5.75	6.38
			2"	76,2						
			2.5"	88,9						
			3"	101,6						
9L				114,3	C/F	C/F	C/F	C/F	C/F	C/F
			4"	152,4						
			6"	168,4						

Smooth Bore Block Style Hangers
Rail and Channel Mounting Systems - Type CRA and SM

Features

- SCRA adapters compatible with Hilti, Unistrut, and Halfen channel systems, consult STAUFF for compatibility
- Mount hangers directly on channel and STAUFF DIN rail system
- Align hangers on channel before tightening fasteners to lock in position
- Hardware plates have rounded corners for safe installation in clean areas
- Anchors: Secure pipe in all directions
- Guides: Use SEG thermal expansion tabs to open diameter and allow pipe to have free axial movement

Specifications

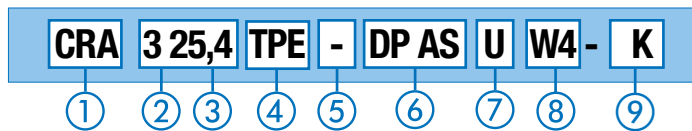
Materials

- Hardware available in 304 and 316 Stainless Steel, optional Carbon Steel, plated.
- Molded inserts - Thermoplastic Elastomer and Polypropylene
- Machined inserts - High Temp PTFE

Size Range

- 0.25 to 4.0 in / 6 to 168 mm for tube, pipe and copper tube
- Consult factory for special diameters

Order Code



1 Hanger type

- Channel strut mounting assembly **CRA**
- Stauff DIN rail mounting assembly **SM**

2 Group Number & Size Range

.25 ... 1.0 in / 6 ... 25.4mm	3
.25 ... 2.0 in / 6 ... 50.8mm	6
2.0 ... 3.5 in / 38 ... 88.9mm	7L
4.0 in / 102mm	8

3 Insert diameter (Ød in mm)

See sizing chart - column Part Number Code

4 Insert Material and Color

Thermoplastic Elastomer	Natural	TPE
Poly Propylene	Blue	PPC
PTFE	White	PTF

5 Thermal Expansion Guide

- Standard hanger - Anchor **Omit**
- Larger diameter - Guide **SEG**

6 Finishing Assembly Hardware

- Cover plate and hex bolts **DP AS**

7 Thread Type

- UNC threads **U**
- Metric threads **M**

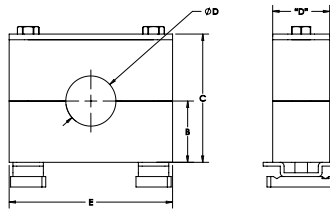
8 Hardware Material Code

- All parts 304 stainless steel **W4**
- All parts 316 stainless steel **W5**

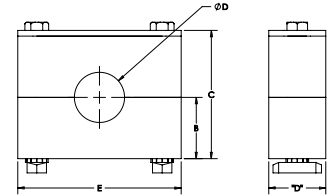
9 Packaging

- Hanger components are bulk packaged **Omit**
- Individual hanger assemblies are kitted in a polybag and labelled **K**

CRA - Channel Rail Assy



SM - DIN Rail Assy



Dimensions

STAUFF Group Number	Tube (ød)	Copper Tube	Pipe (IPS)	Part Number Code (Diam. in mm)	Dimensions Type CRA and SM (Inches/mm)			
					B	C	D	E
3	1/4"			06,4	0.7	1.51	1.18	1.96
	3/8"	1/4"		09,5				
	1/2"	3/8"		12,7	17.8	38.3	30.0	49.8
	3/4"			19				
			1/2"	21,3				
			25,4	1.27	2.65	1.18	3.38	
6	1"							25,4
	1 1/4"							32
	1 1/2"							38
			1/2"					21,3
			3/4"					26,9
			1"					33,7
			1 1/4"					42
			1 1/2"					48,3
			2"					50,8
			2"	50,8				
7L			2"	60,3	2.13	4.37	1.18	5.00
			2.5"	63,5				
			2.5"	73	54.1	111.0	30.0	127.0
			2"	76,2				
			3"	88,9				
8	4"			101,6	2.28	4.75	1.18	5.75
					57.9	120.6	30	146.0

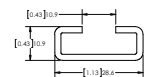
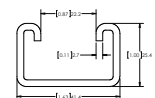
Rail sold separately

Channel rail for CRA adapter:

- SCS-048-1-PL** 4 foot length, carbon steel untreated
- SCS-120-1-PL** 10 foot length, carbon steel untreated
- SCS-048-1-GR** 4 foot length, carbon steel green painted
- SCS-120-1-GR** 10 foot length, carbon steel green painted

DIN rail for SM rail nut:

- TS 11-1 W1** 1 meter length, carbon steel untreated
- TS 11-2 W1** 2 meter length, carbon steel untreated
- TS 11-1 W4** 1 meter length, 304 stainless steel
- TS 11-2 W4** 2 meter length, 304 stainless steel



Smooth Bore Block Style Hangers
Stacking Kits ■ Type SIG-AF



Features

- Stack hangers for multiple tube or pipe runs
 - SIG-AF to stack same group size. Stack kit includes plastic inserts, safety plate and stacking bolts
 - Use one fixed mounted hanger assembly then add stacking kits on top
 - To stack two high, combine one fixed mounted hanger kit with one stacking kit.
- Other Stacking Options:
TDP plate to stack different group sizes.
SDP plate to stack suspended hangers with all thread

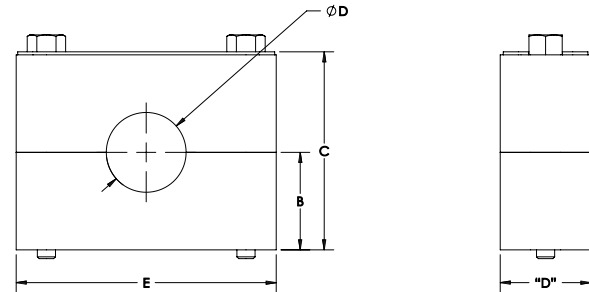
Specifications

Materials

- Hardware available in 304 and 316 Stainless Steel, and Carbon Steel, plated.
- Molded inserts - Thermoplastic Elastomer and Polypropylene
- Machined inserts - PTFE, PA, UHMW, and HDPE

Size Range

- 0.25 to 4 in / 101.6 mm for tube, pipe and copper tube
- Consult factory for larger or special diameters



Order Code

3 25,4 TPE - SIG-AF U W4 - K

① ② ③ ④ ⑤ ⑥ ⑦ ⑧

① Group Number & Size Range

.25 ... 1.0 in / 6 ... 25.4mm	3
.25 ... 2.0 in / 6 ... 50.8mm	6
2.0 ... 3.5 in / 38 ... 88.9mm	7L
4.0 in / 102mm	8

② Insert diameter (∅d in mm)

See sizing chart - column Part Number Code

③ Insert Material and Color

Thermoplastic Elastomer	Natural	TPE
Poly Propylene	Blue	PPC
Special Machined Material		SPC

④ Thermal Expansion Guide

Standard hanger - Anchor	Omit
Larger diameter - Guide	SEG

⑤ Hanger Type

Safety plate and stacking bolts	SIG-AF
---------------------------------	---------------

⑥ Thread Type

UNC threads	U
Metric thread	M

⑦ Hardware Material Code

All parts 304 stainless steel	W4
All parts 316 stainless steel	W5
Carbon Steel metal parts, plated	W3

⑧ Packaging

Hanger components are bulk packaged	Omit
Individual hanger assemblies are kitted in a polybag and labelled	K

Dimensions

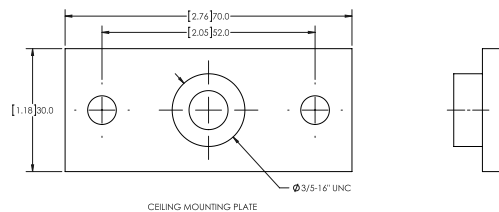
STAUFF Group Number	Tube (∅d)	Copper Tube	Pipe (IPS)	Part Number Code (Diam. in mm)	Dimensions Type SIG-AF			
					B	C	D	E
3	1/4"			06,4	0.7	1.43	1.18	1.96
	3/8"	1/4"		09,5				
	1/2"	3/8"		19				
	3/4"			21,3	17.8	36.3	30.0	49.8
			1/2"	25,4				
	1"			09,5				
6	1/4"			16	1.27	2.57	1.18	3.38
	3/8"	1/4"		21,3				
	5/8"	1/2"		22				
			1/2"	25,4				
	7/8"	3/4"		32				
	1"			33,7				
			3/4"	38	32.1	65.3	30.0	85.9
	1.1/4"			42				
			1"	48,3				
	1.1/2"			50,8				
			1.1/4"	63,5				
			1.1/2"	73				
7L	2"			76,2	2.13	4.29	1.18	5.00
	2"			88,9				
	2.5"			63,5				
			2.5"	73	54.1	109.0	30.0	127.0
			2"	76,2				
8	4"			101,6	2.28	4.59	1.18	5.75
					57.9	116.6	30	146.0

Smooth Bore Block Style Hangers
 Components and Hardware

Component	Group Number	Part Number (eg. using W4)	Material			
			W4	W5	W2	W3
	3	SPR 3 U W4	•	•		
	6	SPR 6 U W4	•	•		
	7L	SPR 7L U W4	•	•		
	8	SPR 8 U W4	•	•		
	3	SP 3 U W4-HC	•	•	•	
	6	SP 6 U W4-HC	•	•	•	
	8	SP 8 U W4-HC	•	•	•	
	9L	SP 9L U W4	•	•	•	
	3	SHP 3 U W4	•			
	6	SHP 6 U W4	•			
	7L	SHP 7L U W4				
	8	SHP 8 U W4	•			
	9L		•			
	3	SPV 3 U W4-HC	•	•	•	
	6	SPV 6 U W4-HC	•	•	•	
	7L	SPV 7L U W4-HC	•	•		
	8	SPV 8 U W4	•	•	•	
	3	DP 3 W4	•	•		•
	6	DP 6 W4	•	•		•
	7L	DP 7L W4	•	•		
	8	DP 8 W4	•	•		•
	9L	DP 9L W4	•			
	3	AS-DP 3 W4	•	•		•
	6	AS-DP 6 W4	•	•		•
	7L	AS-DP 7L W4	•	•		•
	8	AS-DP 8 W4	•	•		•
	9L	AS-DP 9L W4	•	•		
	3	SIG 3 W4	•	•		•
	6	SIG 6 W4	•	•		•
	7L	SIG 7L W4	•	•		
	8	SIG 8 W4	•	•		•
	3	AF 3 U W4	•	•		•
	6	AF 6 U W4	•	•		•
	7L	AF 7L U W4	•	•		
	8	AF 8 U W4	•	•		•
	3 / 6	TDP 3-6 U W4	•			
	3 / 7L	TDP 3-7L U W4	•			
	6 / 7L	TDP 6-7L U W4	•			
	3	SDP 3 U W4	•			
	6	SDP 6 U W4	•			
	7L	SDP 7L U W4	•			
	7L	SDP 8 U W4	•			
	3-8	CRA 1-8 U W4-HC	•	•		•
	3-8	SM 1-8 U W4-HC	•	•		•

Component

Ceiling Mounting Plate



Part Number SCP U W4

Available only in 304 Stainless Steel

Threaded Rod (TR)



Part Number TR - 3/8 - XX - W4 (XX = Length in inches)

Available only in 304 Stainless Steel

Thermal Expansion Insert (SEG)

Allows pipe or tube to move axially for thermal expansion



Part Number SEG - *6 - *50,8 - *PTF

* STAUFF Group 6
 * Diameter in mm 50,8
 * Material PTF
 TPE

Spacer thickness is .06 inch / 1.6mm
 Material is PTFE or TPE

Material Codes

W4 - 304 Stainless Steel
 W5 - 316 Stainless Steel
 W3 - Zinc Plated Carbon Steel
 W2 - Phosphated Plated Carbon Steel

Smooth Bore Block Style Hangers
Other Assemblies ■ Type TDP, SDP and SPR-R**Stacking Assembly, Type TDP**

Stack different group sizes using the TDP transfer plate

Ordering code example - 1" group 3 stacked on 2" group 6

SPR 650,8/3254 PPC TDP DP-AS U W4

**Stacking Assembly, Type SDP**

Stack suspended hangers using the SDP swivel plate

Ordering code example - 1" group 3 stacked on 2" group 6

Requires two different part numbers, (hanger rods ordered separately)

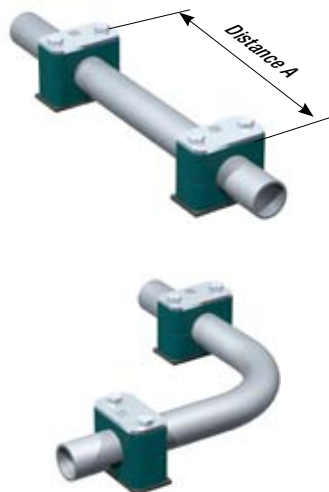
2" hanger assembly part number: **SHP 650,8 SAC DP-AS U W4**

1" hanger assembly part number: **SHP 325,4 SAC SDP-AS U W4**

STAUFF Hangers Bore Diameter Chart

Size (in/mm)	Tube (O.D.) (in/mm)	Copper Tube O.D. (in/mm)	Pipe O.D. (in/mm)	DIN 11850 O.D. mm	DIN 4200 O.D. mm
1/4	.25	.375	.54		
8	6,4	9,5	13,7	10	13,5
3/8	.375	.5	.68		
10	9,5	12,7	17,3	12	17,2
1/2	.5	.625	.84		
15	12,7	15,9	21,3	19	21,3
3/4	.75	.875	1.05		
20	19,1	22,2	26,7	23	26,9
1	1	1.125	1.32		
25	25,4	28,6	33,5	29	33,7
1-1/4	1.25	1.375	1.66		
32	31,8	34,9	42,2	35	42,4
1-1/2	1.5	1.625	1.9		
40	38,1	41,3	48,3	41	48,3
2	2	2.125	2.38		
50	50,8	54,0	60,5	53	60,3
2-1/2	2.5	2.625	2.88		
65	63,5	66,7	73,2	70	76,1
3	3	3.125	3.5		
80	76,2	79,4	88,9	85	88,9
4	4	4.125	4.5		
100	101,6	104,8	114,3	104	114,3
6	6	6.125	6.63		
150	152,4	155,6	168,4	154	154

STAUFF part numbers indicate the bore diameter of the hanger in mm using a comma (,) as a decimal place.

Hanger Location and Spacing Recommendations

Recommended Maximum Spacing between Hangers

Sanitary Tube (in/mm)		Pipe		Copper Tube	
	Spacing (ft/m)	Pipe Size	Spacing (ft/m)	Inch	Spacing (ft/m)
1/4 - 3/4	6	1/4 - 3/4	6	3/8 - 3/4	6
6-19	1,8		1,8		1,8
1 - 1.1/2	8	1 - 1.1/4	8	1 - 1.1/4	8
25 - 38	2,4		2,4		2,4
2 - 3	10	1.1/2 - 2	10	1.1/2 - 3	10
50 - 76	3		3		3
4 - 6	12	3 - 4	12	4 - 8	12
100 - 150	3,6		3,6		3,6
		6 - 12	16		
			4,8		

Installation Next to Pipe Bends, Connectors, Valves and Concentrated Loads
Pipe Bends

Pipe bends should be supported by STAUFF hangers as close to the bends as possible. It is recommended to design these supports as fixed points.

Connections / Couplings

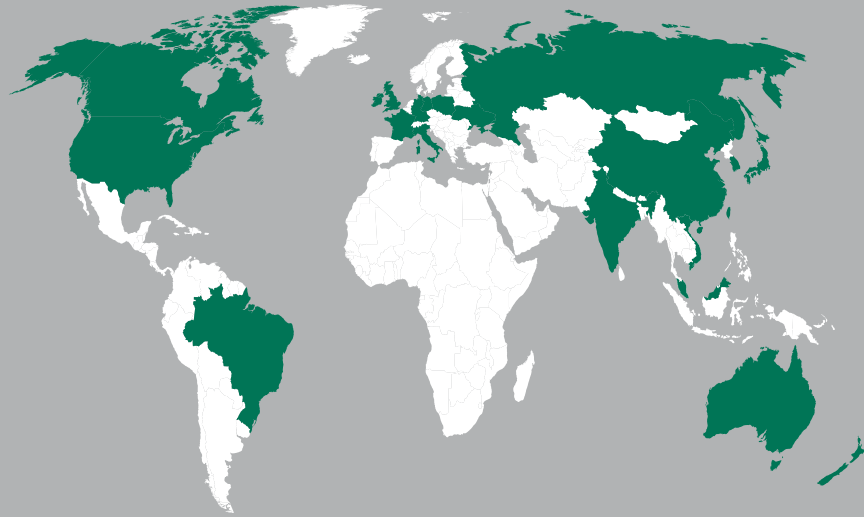
The first STAUFF support should be placed directly next to the connector or coupling. This protects the coupling from vibration.

Valves or Concentrated Loads

If valves or other concentrated loads are present in the pipeline, it is recommended that supports be installed on either side and as close as possible to prevent deflection of pipe.

STAUFF Hangers Bore Diameter Chart


Mechanical Properties					
Compressive Strength	66 Shore D	50 Shore D	80 Shore A	79 Shore D	50 Shore D
Flexural Modules	1050 MPa	95 MPa	70 MPa	178 MPa	600 MPa
Tensile Strength	25 MPa	17 MPa	8.4 MPa	79 MPa	27 MPa
Thermal Properties					
Maximum Brief	-22° to +215° F -30° to 102° C	-50° to + 300° F -45° to + 148° C	-65° to + 700° F -54° to + 371° C	-50° to + 428° F -45° to + 220° C	-328° to + 590° F -200° to + 310° C
Maximum Continuous	-22° to +194° F -30° to 90° C	-40° to + 275° F -40° to + 135° C	-60° to + 400° F -51° to + 204° C	-40° to + 464° F -40° to + 240° C	-328° to + 572° F -200° to + 300° C
Chemical Properties					
Weak Acids, Solvents	conditionally consistent				
Benzine, Mineral Oils	conditionally consistent				
Alcohol, Other Oils	consistent				



UNITED STATES

STAUFF Corporation
7 Wm. Demarest Place
Waldwick, 07463-1542
New Jersey
Tel.: +1 201 444 78 00
Fax: +1 201 444 78 52
sales@stauffusa.com

A Global Presence
with Branches and
Dealers in all Industrial
Countries.



www.stauff.com
www.stauffsanitary.com

AUSTRALIA

STAUFF Corporation Pty. Ltd.
Tel.: +61 2 4271 900
sales@stauff.com.au

BRAZIL

STAUFF Brasil Ltda.
Tel.: 11 47 72 72 00
stauff@stauffbrasil.com

CANADA

STAUFF Canada Ltd.
Tel.: +1 416 282 46 08
sales@stauffcanada.com

CHINA

STAUFF China
Tel.: +86 21 68 18 70 00
info@stauff.com.cn

FRANCE

STAUFF S.A.S.
Tel.: +33 2 54 50 55 50
direction@stauffsa.com

GERMANY

Walter Stauffenberg GmbH & Co. KG
Tel.: +49 2392 91 60
sales@stauff.com

INDIA

STAUFF India Pvt. Ltd.
Tel.: +91 20 67 31 4900
sales@stauffindia.com

IRELAND

STAUFF Ireland
Tel.: +44 28 92 60 69 00
sales@stauffireland.com

ITALY

STAUFF Italia s.r.l.
Tel.: +39 031 65 84 94
sales@stauff.it

KOREA

STAUFF Korea Ltd.
Tel.: +82 51 266 66 66
info@stauff.co.kr

MALAYSIA

STAUFF South East Asia Sdn Bhd
Tel.: +60 3 5637 7888
sales@stauff.com.my

NEW ZEALAND

STAUFF Corporation (NZ) Ltd.
Tel.: +64 9 271 48 12
info@stauff.co.nz

POLAND

STAUFF Polska Sp. z o.o.
Tel.: +48 58 660 11 60
sales@stauff.pl

RUSSIAN FEDERATION

STAUFF LLC
Tel.: +7 495 276 16 50
sales@stauff.ru

UNITED KINGDOM

STAUFF UK Ltd.
Tel.: +44 114 251 85 18
sales@stauff.co.uk

VIETNAM

STAUFF Vietnam Ltd.
Tel.: +84 8 3948 1041
sales@stauff.com.vn